

BALADE DES SCOOTERS 15/10/2006

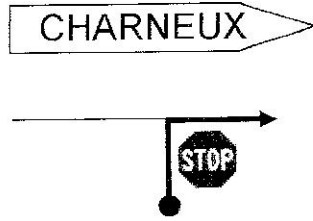
MATIN 71,7

APRES-MIDI 63,8

VOITURE BALAI 0496/50,48,06

1

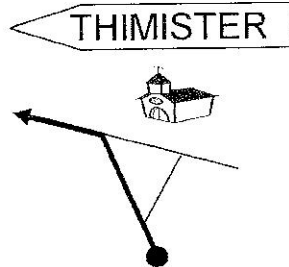
4



1,300

2,500

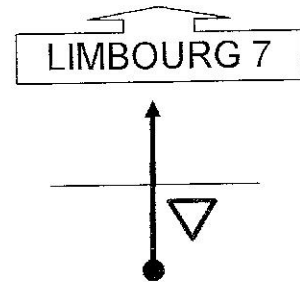
8



0,600

8,100

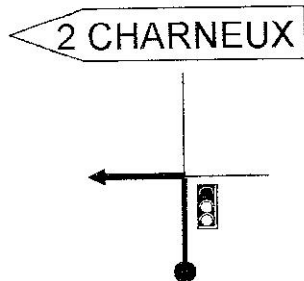
12



0,700

12,400

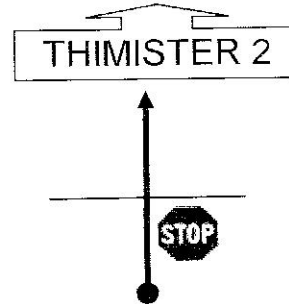
3



0,800

1,200

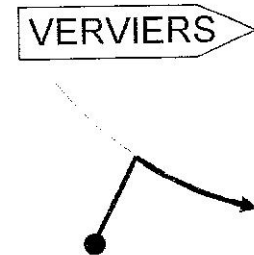
7



3,000

7,500

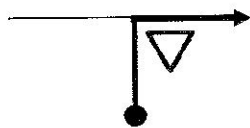
11



1,500

11,700

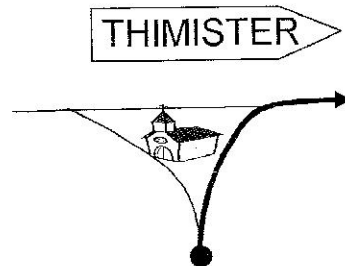
2



0,400

0,400

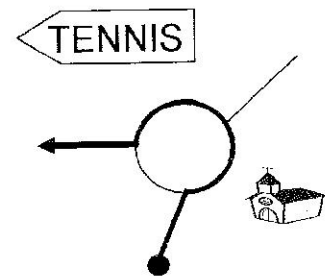
6



2,000

4,500

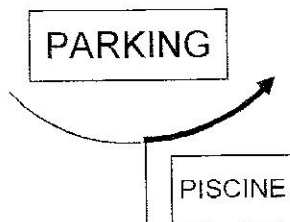
10



0,200

10,200

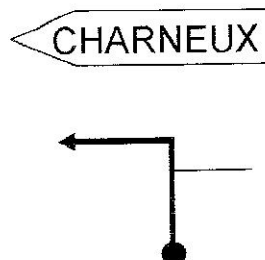
1



0,000

0,300

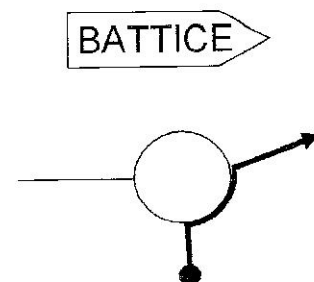
5



2,800

1,900

9



10,000



BALADE DES SCOOTERS 15/10/2006
 MATIN 71,7
 APRES-MIDI 63,8
 VOITURE BALAI 0496/50,48,06

2

<p>16</p> <p>WELKENRAEDT</p>	<p>20</p> <p>LIMBOURG</p>	<p>24</p>
<p>0,800</p>	<p>0,300</p>	<p>0,400</p>
<p>15,400</p>	<p>20,500</p>	<p>25,400</p>
<p>15</p> <p>BILSTAIN</p>	<p>19</p> <p>LIMBOURG</p>	<p>23</p>
<p>0,400</p>	<p>0,200</p>	<p>1,900</p>
<p>14,600</p>	<p>20,200</p>	<p>25,000</p>
<p>14</p> <p>LIMBOURG 6</p>	<p>18</p> <p>LIMBOURG</p>	<p>22</p> <p>VERVIERS</p>
<p>0,800</p>	<p>4,600</p>	<p>1,800</p>
<p>14,200</p>	<p>20,000</p>	<p>23,100</p>
<p>13</p> <p>LIMBOURG</p>	<p>17</p> <p>DEVIATION</p>	<p>21</p>
<p>13,400</p>	<p>0,900</p>	<p>0,800</p>
<p>16,300</p>	<p>21,300</p>	<p>21,300</p>



BALADE DES SCOOTERS 15/10/2006

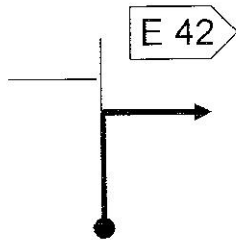
MATIN 71,7

APRES-MIDI 63,8

VOITURE BALAI 0496/50,48,06

3

28



32

RSP
THEUX

36

ARRET
PARC
ANIMALIER



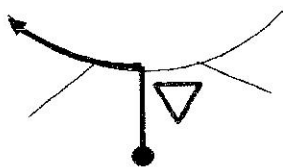
2,000

29,200

4,400

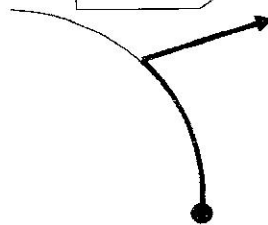
45,200

27



THEUX

31



35

SUIVRE
PARC ANIMALIER

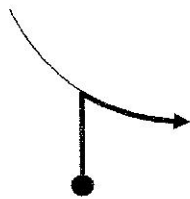
1,200

27,200

3,400

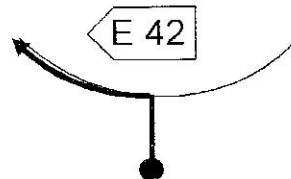
34,100

26



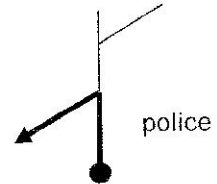
pompe Q8 à 32,1

30



34

2 JEVOUMONT



0,400

26,000

1,500

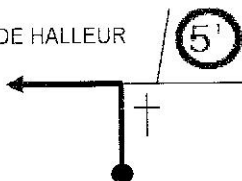
30,700

1,200

40,800

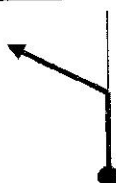
25

RUE DE HALLEUR



E 42

29



pompe à total à 40,1

33

PARC ANIMALIER



0,200

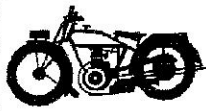
25,600

1,200

30,400

39,600

39,600



BALADE DES SCOOTERS 15/10/2006

MATIN 71,7

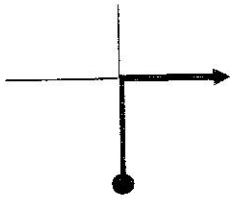
APRES-MIDI 63,8

VOITURE BALAI 0496/50,48,06

4

40

REMOUCHAMPS 5

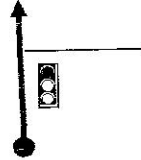


2,700

3,000

44

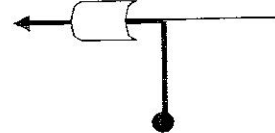
AYWAILLE



0,500

9,100

48

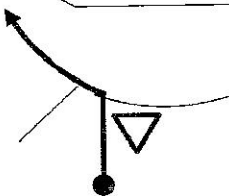


0,300

11,600

39

MENOBU



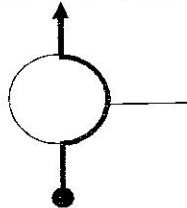
0,300

0,300

pompe shell à 8,9

43

AYWAILLE 2



0,400

8,600

47

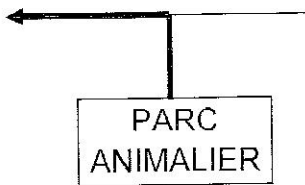
PARKING
SNCB



0,200

11,300

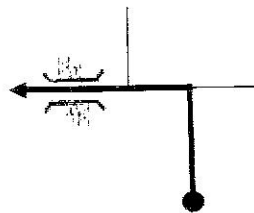
38



0,000

0,000

AYWAILLE

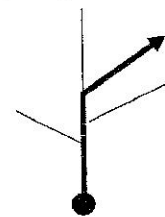


0,200

8,200

42

GARE SNCB



0,200

11,100

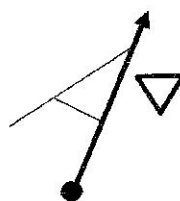
37

METTRE
LE COMPTEUR
A ZERO

0,000

5,000

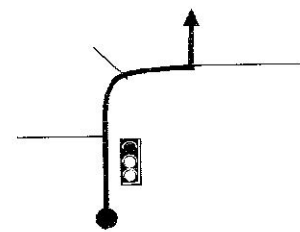
AYWAILLE



8,000

41

GARE SNCB



1,800

10,900

45



BALADE DES SCOOTERS 15/10/2006

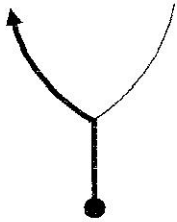
MATIN 71,7

APRES-MIDI 63,8

VOITURE BALAI 0496/50,48,06

5

52



0,600

14,200

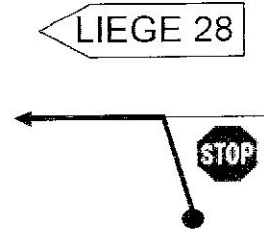
56



0,600

16,500

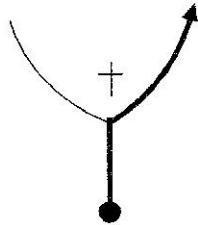
60



1,700

20,900

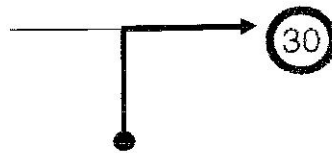
51



0,300

13,600

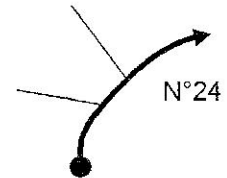
55



0,300

15,900

59



1,300

19,200

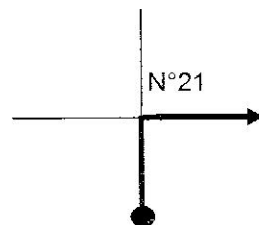
50



0,500

13,300

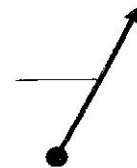
54



1,400

15,600

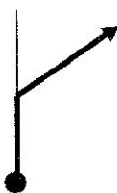
58



0,700

17,900

49



1,200

12,800

53



1,100

15,300

57

COMBLAIN
AU PONT

0,700

17,200



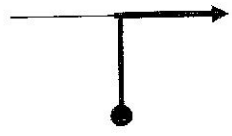
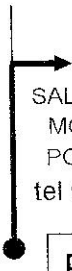
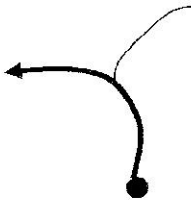
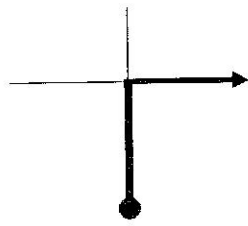
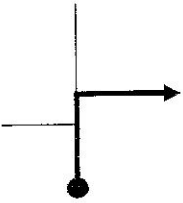
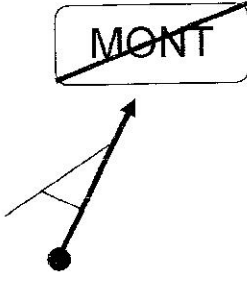
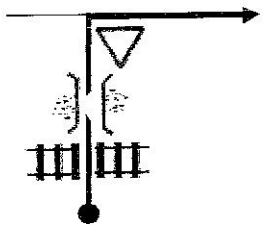


BALADE DES SCOOTERS 15/10/2006

MATIN 71,7

APRES-MIDI 63,8

VOITURE BALAI 0496/50,48,06

6

<p>64</p> <p>METTRE COMPTEUR A ZERO</p>	<p>68</p> <p>MONT</p>	<p>72</p> <p>ESNEUX 10</p> 
<p>63</p>  <p>SALLE UNION MOSANE A POULSEUR tel 04/380,11,58</p> <p>PARKING</p>	<p>67</p> <p>MONT</p> 	<p>71</p> <p>ESNEUX 10</p> 
<p>62</p> <p>RSP POULSEUR</p> <p>pompe total à 22,9</p>	<p>66</p> <p>ANTHISME</p> 	<p>70</p> <p>MONT</p> 
<p>61</p> <p>LIEGE 28</p> 	<p>65</p> <p>PARKING</p> 	<p>69</p> <p>GITE</p> 
<p>5,000</p> <p>26,500</p>	<p>0,800</p> <p>1,200</p>	<p>0,200</p> <p>6,800</p>
<p>0,400</p>	<p>0,400</p>	<p>0,700</p> <p>4,400</p>
<p>0,600</p> <p>21,500</p>	<p>0,000</p>	<p>0,400</p> <p>3,700</p>



BALADE DES SCOOTERS 15/10/2006

MATIN 71,7

APRES-MIDI 63,8

VOITURE BALAI 0496/50,48,06

7

<p>76</p> <p>LIEGE 26</p> <p>1,200 9,500</p>	<p>80</p> <p>21 LIEGE</p> <p>4,000 15,100</p>	<p>84</p> <p>DOLEMBREUX</p> <p>0,050 18,850</p>
<p>75</p> <p>HODY</p> <p>0,600 8,300</p>	<p>79</p> <p>ESNEUX</p> <p>1,100 11,100</p>	<p>83</p> <p>DEVIATION CHU</p> <p>1,100 18,800</p>
<p>74</p> <p>HODY 2</p> <p>0,700 7,700</p>	<p>78</p> <p>RSP</p> <p>HODY VILLERS AUX TOURS</p> <p>0,700 17,700</p>	<p>82</p> <p>pompe texaco à 18,3</p> <p>TILF 7</p> <p>0,700 17,700</p>
<p>73</p> <p>ESNEUX 10</p> <p>0,200 7,000</p>	<p>77</p> <p>VILLERS AUX TOURS 2</p> <p>0,500 10,000</p>	<p>81</p> <p>ESNEUX</p> <p>1,900 17,000</p>



BALADE DES SCOOTERS 15/10/2006

MATIN 71,7

APRES-MIDI 63,8

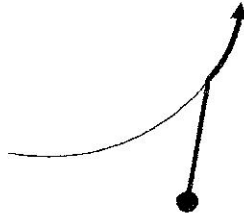
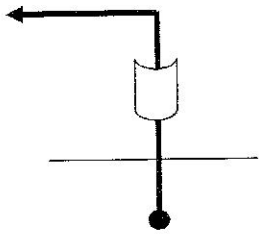
VOITURE BALAI 0496/50,48,06

8

88

92

96



METTRE
COMPTEUR
A ZERO

0,700

27,000

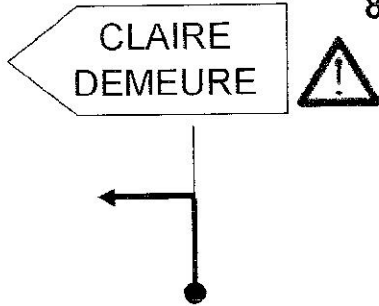
0,700

31,500

87

91

95



ARRET
PARKING
BANNEUX

0,300

26,300

1,600

30,800

2,400

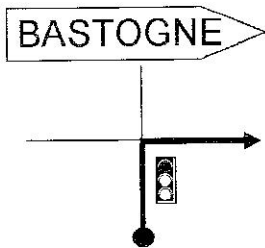
36,600

86

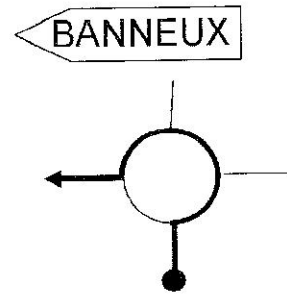
90

94

pompe europétrol à 26,1



RSP
ANDOUMONT



7,150

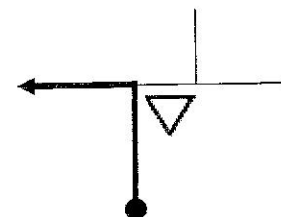
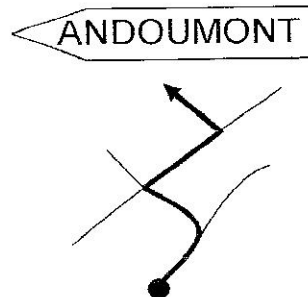
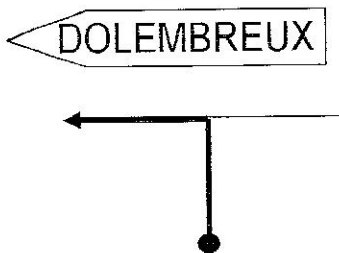
26,000

0,400

34,200

85

89



1,250

20,100

2,200

29,200

2,300

33,800



BALADE DES SCOOTERS 15/10/2006

MATIN 71,7

APRES-MIDI 63,8

VOITURE BALAI 0496/50,48,06

9

<p>100</p> <p>RUE VOIX EN CROIX</p>	<p>104</p> <p>SPRL ERVAC électricité</p>	<p>108</p> <p>BRUYERES 2</p>
<p>3,000</p>	<p>3,600</p>	<p>1,100</p>
<p>0,300</p>	<p>0,600</p>	<p>0,900</p>
<p>99</p>	<p>103</p> <p>OLNE</p>	<p>107</p> <p>3 SOUMAGNE</p>
<p>0,300</p>	<p>1,700</p>	<p>8,000</p>
<p>0,300</p>	<p>0,300</p>	<p>1,000</p>
<p>6</p> <p>NESSONVAUX</p>	<p>102</p>	<p>106</p>
<p>0,300</p>	<p>2,700</p>	<p>6,300</p>
<p>0,300</p>	<p>0,300</p>	<p>1,500</p>
<p>97</p> <p>PARKING BANNEUX</p>	<p>101</p>	<p>105</p> <p>OLNE</p>
<p>0,000</p>	<p>2,300</p>	<p>5,900</p>
<p>0,000</p>	<p>2,300</p>	<p>4,100</p>
<p>0,000</p>	<p>2,300</p>	<p>13,200</p>



BALADE DES SCOOTERS 15/10/2006

MATIN 71,7

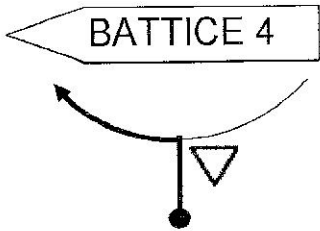
APRES-MIDI 63,8

VOITURE BALAI 0496/50,48,06

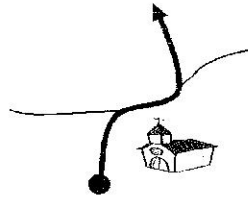
10

pompe à 22,8

112



116



0,200

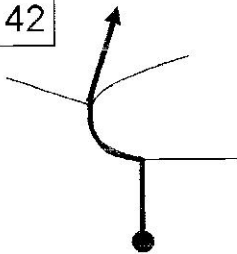
22,100

1,400

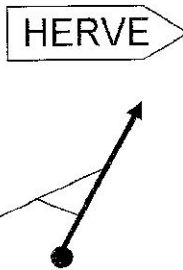
26,900

E 42

111



115



LE H.M.R.C.
VOUS REMERCIE
DE VOTRE
PARTICIPATION

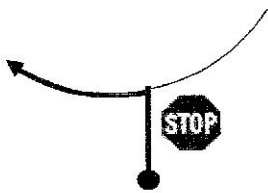
2,800

21,900

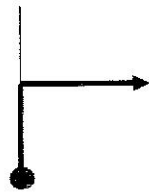
1,800

25,500

110



HERVE



118

PARKING
ARRIVEE

PISCINE

0,800

19,100

1,600

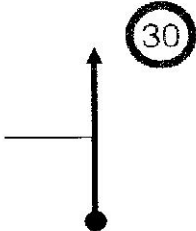
23,700

0,200

27,200

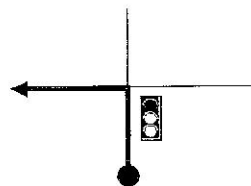
route en
mauvais état

109

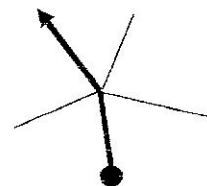


113

HERVE



117



1,700

18,300

1,200

23,300

0,100

27,000